

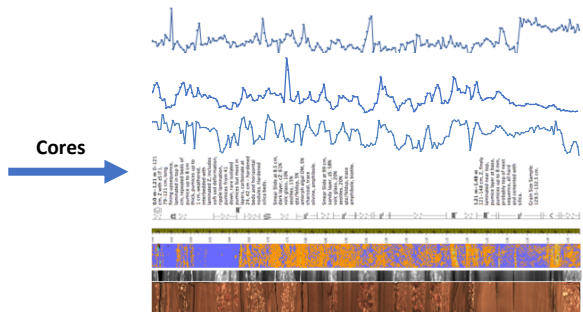
FACILITY DATA

DRILLING / FIELD



- Drilling metadata
- Core metadata
- On-site subsampling metadata
- On-site multisensor core logger data
- Downhole log data
- Driller shift logs

CORE SCANNING + PROCESSING



- Lithologic descriptions
- Core images (optical, X-ray, hyperspec)
- Multisensor core logger data
- XRF scans
- Smear slide descriptions
- SEM, XRD
- Subsampling metadata
- Splice/Composite metadata
- Depth scales

ANALYSIS

PROXIES

- Biomarkers
- Diatoms
- Ostracodes
- Pollen
- Isotopes
- $\delta^{18}O$, δD , $\delta^{13}C$
- XRF

CHRONOLOGY

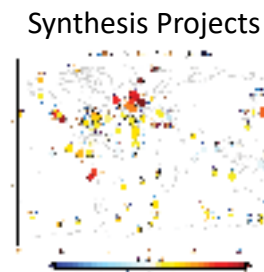
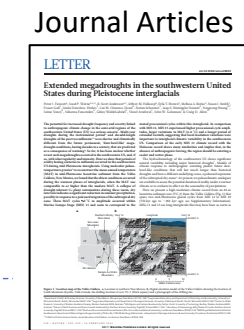
- Age Control
- Tephrochronology
- Paleomagnetism
- Age-Depth Models

GEOMICROBIOLOGY

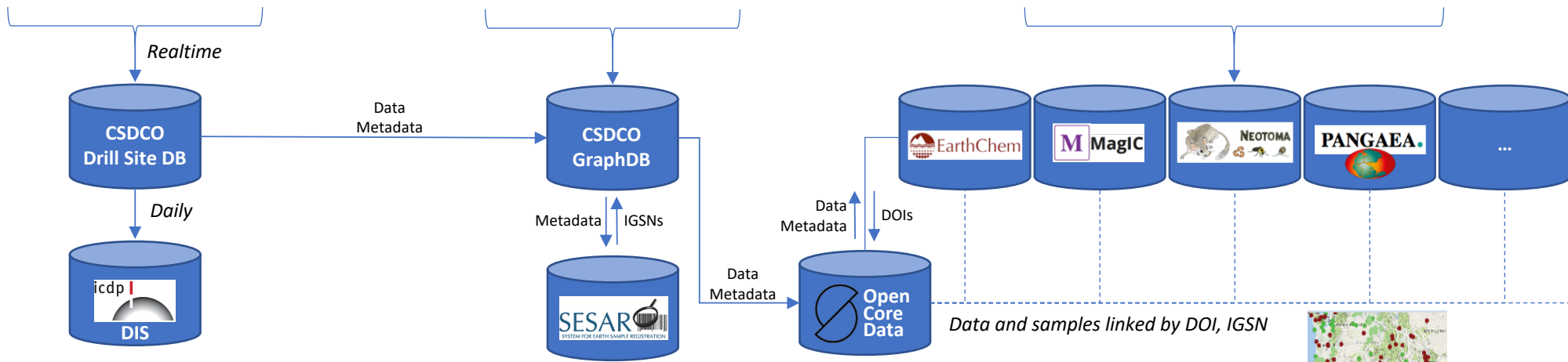
- Pore water isotopes
- Mineralogy & Diagenesis
- Speciation
- Biochemistry
- Cells, DNA

Data Interpretations

PUBLICATION



Visualization & Outreach



Community Databases

